

Login | Join

search...

About Advertise Contact Us



sew4home™

Transform your space.

Front Page Projects Tips & Resources Glossary Project Index

STEP-BY-STEP TUTORIALS MAKE SEWING EASY

Front Page Projects Kitchen Linens ScrapBusters: Quilted Mug Rug with Napkin Pocket

ScrapBusters: Quilted Mug Rug with Napkin Pocket

Editor: Liz Johnson

Wednesday, 21 January 2015 1:00

PDF EMAIL PRINT



"Snug as a mug on a rug." Just gotta say that and get it out of the way! Sometimes a placemat takes up too much real estate, and a coaster is too small to hold anything extra. A mug rug is bigger than a coaster but smaller than a placemat – just the right size at your desk, in the sewing room, or on a small end table in the living room or den. Our design adds a unique little pocket with its own napkin for truly self-contained snacking. We used scraps from *Bonnie & Camille's Marmalade collection for Moda Fabrics* and framed it all with coordinating rick rack. The combination of sweet colors and pretty prints really makes a difference on this small project. Be bold with your choices, mix and match to fashion your own look. For more on creating great combos, take a look at our tutorial: [Mixing and Matching Designer Fabric Collections](#).

Our ScrapBuster articles are part of an ongoing series here on Sew4Home. We come up with fast and clever little projects you can whip out with just the items you have on hand.



Subscribe to Our Newsletter:

Enter email address





Today's project uses a number of quilting techniques. If you are new to quilting, check out our five-part Quilting Basics series for all the tips you need to get started with success:

[Quilting Basics - Tools, Notions & Other Stuff You Need - Part 1 of 5](#)

[Quilting Basics - Rotary Cutting & Trimming - Part 2 of 5](#)

[Quilting Basics - Quilt Blocks from Squares, Rectangles & Triangles - Part 3 of 5](#)

[Quilting Basics - Piecing Quilt Blocks by Machine Part 4A of 5](#)

[Quilting Basics - Piecing Quilt Blocks by Machine Part 4B of 5](#)

[Quilting Basics - Quilting The Quilt - Part 5 of 5](#)

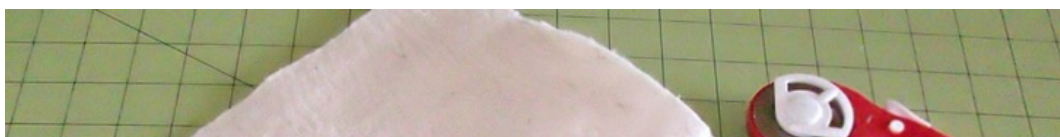


Our Mug Rug finishes at approximately 12" wide x 8" high, excluding the rick rack. The napkin is about 9" x 9" when flat.

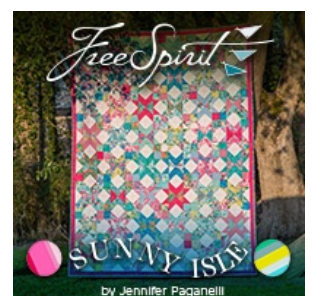
Sewing Tools You Need

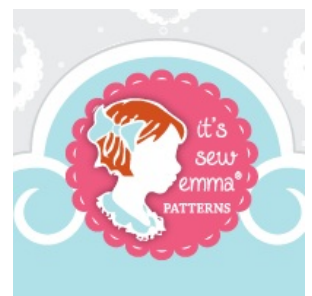
- Any Sewing Machine (we recommend the [Janome Horizon Memory Craft 8900 QCP](#))
- Walking foot – the [MC8900 QCP](#) has the built-in AcuFeed Flex™ system, which we used (with the optional narrow walking foot VD) - and love. If you do not have a built-in feeding system, we recommend a [Walking foot](#) or similar.
- [Quarter Inch Seam foot](#) (standard on the [MC8900 QCP](#))

Fabric and Other Supplies



Renaissance
Designer Ribbons
Exquisite Woven Jacquard Ribbons
renaissanceribbons.com





The Newest Collections

- TWO Fat Quarters (18" x 22") - one for the back, pocket panel and four of the inner triangles and one for the napkin and four of the inner triangles. If you choose not to use Fat Quarters, you'll need approximate 1/2 yard cuts or appropriately-sized scraps from two coordinating fabrics. We used the following Fat Quarters from Bonnie & Camille's Marmalade collection:
 - Cotton Apron in Cream (back, pocket panel and four of the triangles)
 - Cotton Jam in Leaf (napkin and four of the triangles)
- FOUR Charm Squares (5" x 5") - two each for the outer triangles. If you choose not to use Charm Squares, you will need big enough scraps to cut two 3 3/4" squares from each coordinating fabric. We used the following Charm Squares from Bonnie & Camille's Marmalade collection for Moda Fabrics:
 - Cotton Stripe in Gray
 - Cotton Stripe in Blueberry
- Scrap or 1/3 yard of low loft cotton batting; we used 2017 Natural One™ by Pellon
- 1 yard of coordinating medium rick rack; we used turquoise
- All purpose thread to match fabrics
- See-through ruler
- Iron and ironing board
- Scissors or rotary cutter and mat
- Fabric pen or pencil
- Straight pins
- Seam gauge
- Seam ripper
- Hand sewing needle

Getting Started

1. From the Fat Quarter or scrap for the back, pocket panel and four of the triangles (*Cotton Apron in Cream in our sample*), cut the following:
 - ONE 8 1/2" x 12 1/2" rectangle for the back
 - TWO 3" x 4 1/2" rectangles for the pocket and pocket facing
 - ONE 4 1/2" x 8 1/2" rectangle for the pocket panel
 - TWO 3 3/4" x 3 3/4" squares - cut each square along the diagonal to yield four triangles total
2. From the Fat Quarter or scrap for the napkin and four of the triangles (*Cotton Jam in Leaf in our sample*), cut the following:
 - ONE 10" x 10" square for the napkin
 - TWO 3 3/4" x 3 3/4" squares - cut each square along the diagonal to yield four triangles total
3. From the first set of two matching charm squares or scraps, cut TWO 3 3/4" x 3 3/4" squares. Then cut each square along the diagonal to yield four triangles total.
4. From the second set of two matching charm squares or scraps, cut TWO 3 3/4" x 3 3/4" squares. Then cut each square along the diagonal to yield four triangles total.

NOTE: If you are working with striped Charm Squares as we were, here's a hint for perfectly matching cuts: place the two squares on top of one other with all the edges aligned and the stripes lined up. Pin lightly around the edge. Cut down into a 3 3/4" square through both layers, then cut diagonally from upper left corner to lower right corner - again through both layers.
5. From the batting, cut ONE 10" x 15" rectangle.

At Your Sewing Machine & Ironing Board



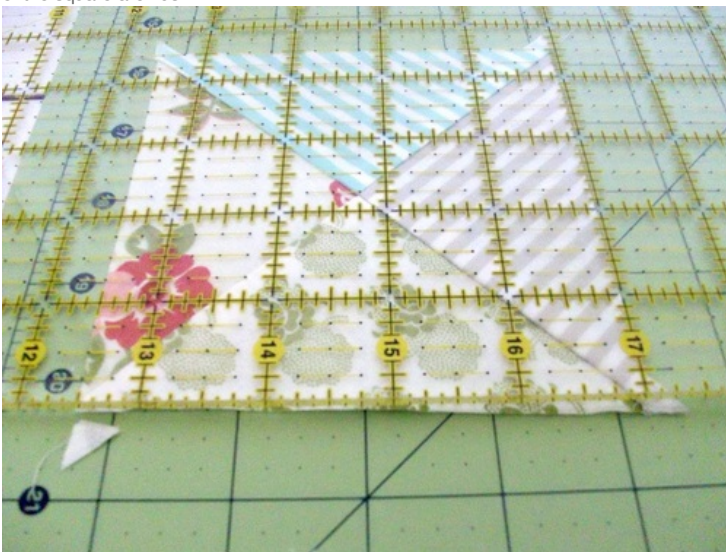


Patchwork

1. Arrange each set of four triangles to form a square. You'll end up with four squares. Use the diagram above to match our design or create your own.



2. Starting with one set of four, place the top two triangles right sides together, aligning their center sides. Pin in place. Stitch together, using a 1/4" seam allowance.
3. Place the bottom two triangles right sides together, aligning their center sides. Pin in place. Stitch together, using a 1/4" seam allowance.
4. Place the sewn pairs right sides together, aligning the long center sides and being careful to match the seams. Pin in place. Stitch together, using a 1/4" seam allowance to create a finished square.
5. Because you're working with triangles, you'll end up with little "dog ears" at each corner. Trim these away so all four sides of the square are flush.



6. Repeat to create the remaining squares from the remaining sets of triangles.
NOTE: As mentioned above, if you are new to piecing, check out *Quilting Basics Series*. All the sections are excellent for those new to quilting; *Part 4A* will be especially helpful to create these squares.
7. When all four small squares are complete, arrange them to create one larger square. Again, follow the diagram above to match our design or create your own.
8. Place the top two squares right sides together, aligning their center sides. Pin in place. Stitch together, using a 1/4" seam allowance.
9. Place the bottom two squares right sides together, aligning their center sides. Pin in place. Stitch together, using a 1/4"

The Newest Collections by the Designers You Love!

SHOP NOW

fabric.com

modafabrics.com



Meet Charlie Sandors

Delivering fictional eulogies at the funerals of strangers is just his weird hobby... until the day those loving remembrances come a little too close to the murderous truth. Now it's for real.

"...a brilliant newcomer to the field of mystery writers."
Jo Packham, editor Where Women Create, Publisher WWC PRESS

"A great concept..."
Chelsea Cain, author

SHOP.

CONNECT.

ENJOY.

9. Place the bottom two squares right sides together, aligning their center sides. Pin in place. Stitch together, using a $\frac{1}{4}$ " seam allowance.
10. Place the sewn pairs right sides together, aligning the long center sides and being careful to match all your seams and points. Pin in place. Stitch together, using a $\frac{1}{4}$ " seam allowance to create the finished large square.



Pocket panel

1. Find the two 3" x 4½" pocket pieces. Decide which is your front piece. If you have a nicer fussy cut on one, use it as the "front."
2. Find the rick rack. Cut an approximate 5½" length.
3. Pin the rick rack to the right side of the front pocket piece along its 4½" top edge, centering it so it extends beyond both sides. The middle of the rick rack should be $\frac{1}{4}$ " from the top raw edge of the fabric.
4. Machine baste the rick rack in place, using a $\frac{1}{4}$ " seam. If you positioned correctly as detailed above, this seam should run down the middle of the rick rack.



5. Trim the edges of the rick rack flush with the fabric.
6. Place the front (rick rack) pocket piece right sides together with the plain back piece. Pin in place along the top edge only.
7. Using a $\frac{1}{4}$ " seam allowance, sew the two pieces together. If you sew with the front piece facing up, you can simply follow along in your original machine basting seam line for a perfect match.



8. Press the seam allowance to one side, then fold the two pieces wrong sides together, which will make the rick rack stand

All from Earth's biggest selection.

amazon

Privacy

Download a **free** audiobook today

[LEARN MORE](#)

audible
an amazon company

up from the seam. Press well.

9. Find the 4½" x 8½" pocket panel. Place it right side up on your work surface.
10. Place the finished pocket on top of the pocket panel, aligning the bottom raw edges and the sides. Pin in place along the left side only.



Assembling the front two panels and quilting

1. Find the finished patchwork panel. Place it right sides together with the finished pocket panel, aligning the right edge of the patchwork panel and the left edge of the pocket panel. Pin in place.



2. Stitch together, using a ¼" seam allowance. Press the seam towards the patchwork panel.



3. Find the batting rectangle. Place it flat on your work surface. Place the finished mug rug top on the batting, centering the top side to side and top to bottom so there is excess batting all around. Fold the pocket to one side to reveal the full pocket panel. Pin the top to the batting.





4. Stitch in the ditch along the vertical seam between the patchwork panel and the pocket panel. A Walking foot is recommended for this and all the quilting steps. We're using our Janome MC8900 QCP with its AcuFeed Flex™ system.



5. Stitch in the ditch along all the patchwork seams: the two diagonal seam lines and the two straight seam lines (one horizontal, one vertical).



6. Using your see-through ruler and a fabric pen or pencil, mark straight vertical lines for quilting across the pocket panel (remember, the pocket is still folded out of the way). The lines should be $\frac{1}{2}$ " apart.



NOTE: Make sure your fabric pen or pencil will easily wipe away or vanish with exposure to the air; you are working on the right side of the fabric!

7. Stitch along the the drawn lines to complete the quilting.



Edge rick rack and finishing

1. Find the remaining rick rack. You'll work with it as a continuous length, cutting as you go.
2. Find the mug rug quilted top. Make sure the pocket is folded back into its proper position.
3. Place the mug rug quilted top right side up on your work surface. Starting along the top edge, pin the rick rack so its middle is along the $\frac{1}{4}$ " seam line - just as you did with the pocket piece. The rick rack should start $\frac{1}{4}$ " in from the first corner. Pin in place, letting the rick rack continue out from the opposite corner.
4. Machine baste the rick rack in place along this first side (the top), again - remember to start $\frac{1}{4}$ " in from the corner. Stitch across, using a $\frac{1}{4}$ " seam allowance, stop and lock the seam $\frac{1}{4}$ " from the opposite corner.



5. Trim the rick rack.
6. Turn the corner and position the rick rack along the side edge, following the same steps as above: start $\frac{1}{4}$ " from the corner and center along along the $\frac{1}{4}$ " seam line. The peaks of the intersecting rick rack should meet in the corner as shown.



7. Continue to stitch the bottom length of rick rack and the final side length of rick rack, finally ending at the corner where you began, matching the peaks of the rick rack.



8. Place the mug rug front and the back panel right sides together, sandwiching the rick rack between the layers. Pin in place around all sides, leaving an approximate 3" opening along the bottom for turning.



9. Stitch with the front facing up (the batting facing up) so you can follow along in the rick rack machine basting seam line. Stitch around all four sides, remembering to pivot at each corner and to lock your seam on either side of the 3" opening along the bottom.



10. Trim the corners and turn mug rug right right side out. Press well, pressing in the raw edges of the opening so they are flush with the sewn seam.
11. We hand stitched the opening closed for extra security. Then, topstitched 1/4" from the rick rack around all four sides.





NOTE: Normally, this topstitching would be enough to close the opening used for turning. However, when using the small 1/4" seams, it's a good idea to hand stitch closed to be extra sure the seam remains sealed.

Napkin

1. Find the 10" x 10" napkin square.
2. Press each side to create a narrow double turn hem with clean mitered corners.



3. If you are new to this technique, [we have a great step by step tutorial](#).
4. Stitch in place all around, pivoting at the corners.



5. Fold the napkin and insert into the pocket.





Contributors

Project Design: Alicia Thommas

Sample Creation and Instructional Outline: Michele Mishler

[Pin It](#)

Related Articles

[ScrapBusters: Colorful Ruffled Oven Mitts](#)

[ScrapBusters: Mini Waist Pack](#)

[Valentine's Day Treat Bag Toppers](#)

[Classic Zipper Pouch](#)

[Handy Slip-on or Clip-on Belt Pouch](#)

[Lip Balm Mini Case & Key Ring](#)

[ScrapBusters: Door Knob Reminder Caddy](#)

[ScrapBusters: Mini Drawstring Gift Bags](#)

[ScrapBusters: Rainbow Zippered Pouches in Two Sizes](#)

[ScrapBusters: Moroccan Style Deco Stitch Tea Towels](#)

[ScrapBusters: Passport Cover in Faux Leather](#)

[ScrapBusters: Cord Wraps in Two Sizes](#)

[ScrapBusters: Full Circle Zippered Sewing \(& More\) Case](#)

[ScrapBusters: Soothing Eye Pillows](#)

[ScrapBusters: Lace Overlay Clutch](#)

[ScrapBusters: Quilted Wrap Front Belt with Bead Accents](#)

[ScrapBusters: Sewn Paper & Fabric Greeting Card](#)

[ScrapBusters: Fancy Border Tea Towels](#)

[ScrapBusters: Clip on or Slip on Belt Pouch](#)

[ScrapBusters: Two-Tone Gift Bags in Three Sizes](#)

[Key Ring Gift Card Case: ScrapBusters](#)

[ScrapBusters: Rustic Sachets with Hand Stitched Accents](#)

[ScrapBusters: Sparkly Hair Clips](#)

[ScrapBusters: Playful Appliquéd Owls Placemat Set](#)

[ScrapBusters: Leather Coasters](#)

[ScrapBusters: Mini Pouf Patchwork Pincushion](#)

[ScrapBusters: Outdoor Mini Mats](#)

[Lip Balm Key Ring Mini Case](#)

[ScrapBusters: Fabric Bowl Covers](#)

[ScrapBusters: Reversible Headband Ties or Hair Wraps](#)

1 2 [next >](#) [last >>](#)

Comments (7)

Donna said:



I am not sure where I went wrong, but my top piece does not match up to my back piece. The patchwork panel ended up measuring 9x9, which also made it longer than the pocket piece. Anyone know where I could've gone wrong? Luckily I was practicing on scrap fabric, but would like to know where I went wrong before I make a nice one!

Kind of discouraged over here.

Feb 27, 2017

[reply](#)

Liz Johnson.Editor.Sew4Home said:



@Donna - So sorry you're feeling discouraged. I'm not sure where things could have gotten off. As you look at your pieces, do they compare with the pictures within the tutorial? Sometimes it can help to look closely at the 1" grid squares on the cutting mat to insure that everything is cut to the proper size. Each of your four pinwheel blocks should finish at 4-1/2" square -- prior to seaming them together. Make sure all the seams all a full 1/4", which means (again as shown against the cutting mat grid) when the four squares are pieced, that assembled square will be 8-1/2". Also make sure your starting squares are a full 3-3/4". I hope that helps a little bit. Don't give up. And -- good idea to practice first!

Feb 27, 2017

[reply](#)

Mary Lou Nelson said:



Very professional, easy to understand, quarter square triangles with 4 fabrics is genius.
It's constructed so well, you can use this everyday. It'll wash & tumble dry perfectly.

Jun 06, 2016

[reply](#)

Liz Johnson.Editor.Sew4Home said:



@ Mary Lou - Thank you so much! We hope you'll give the project a try. It is a fun one!

Jun 07, 2016

[reply](#)

Quilting Focus said:



At Quilting Focus we did a similar post for a cute little Mug Rug, they are so much fun to make and a great way, like you said, to use up spare bits and pieces of fabric. I loved the easy steps you took us through, looks awesome! Also love the idea of fast and clever projects that you can finish or do in between the little ones J Happy Quilting

Oct 03, 2015

[reply](#)

Kris Valle said:



Just beautiful! Thanks!

Jan 23, 2015

[reply](#)

Yvonne Bentley said:



Absolutely beautiful, a wonderful idea...but it's so nice I wouldn't like to use it.

Jan 22, 2015

[reply](#)

Add new comment

Your name

Comment *

File ▾ Edit ▾ View ▾ Format ▾

B *I* U ~~S~~ “ ” ☺

*Sew4Home reserves the right to restrict comments that don't relate to the article, contain profanity, personal attacks or promote personal or other business.

By submitting this form, you accept the [Mollom privacy policy](#).

