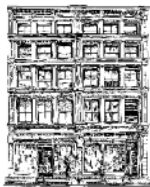


**TIMELESS
TREASURES**

BROOME STREET PATTERNS



Scenic Snowfall

Fracture by Pam See



Finished quilt: 47½" x 67½"

Fabric Requirements

3/4 yard Winter-C4629 Winter

1/4 yard each:

Winter-C4631 Ice

Winter-C4634 Snow

Winter-C4632 Leaf

Studio-C3096 Navy

Winter-C4633 Tree

Studio-C3096 Blue

1 5/8 yards Fun-C8224 Ivory

1/2 yard Studio-C3096 Sky (binding)

3 1/8 yards backing fabric of your choice

55" x 73" batting

Cutting

As you cut, label the pieces as indicated to make it easier to assemble the quilt.

From Winter-C4629 Winter panel:

• Cut seven 3 1/2" x 42 1/2" strips, keeping them in order and labeling them 1 to 7. Place the label near the top of the print to keep the strips properly oriented.

From both Winter-C4631 Ice and Winter-C4634 Snow:

• Cut two 2 1/2" x width-of-fabric (WOF) strips. Sub-cut one 2 1/2" square (D), one 2 1/2" x 3 1/2" strip (E), one 2 1/2" x 5 1/2" strip (F) and one 2 1/2" x 33 1/2" strip.

From both Winter-C4632 Leaf and Studio-C3096 Navy:

• Cut three 2 1/2" x WOF strips. Sew two of the strips together end to end with a diagonal seam and cut a 2 1/2" x 53 1/2" strip. From the leftover scrap and the remaining strip, cut one 2 1/2" x 33 1/2" strip, two 2 1/2" squares (D), two 2 1/2" x 3 1/2" strips (E) and two 2 1/2" x 5 1/2" strips (F).

From both Winter-C4633 Tree and Studio-C3096 Blue:

• Cut two 2 1/2" x WOF strips. From one strip, sub-cut one 2 1/2" square (D), one 2 1/2" x 3 1/2" rectangle (E) and one 2 1/2" x 5 1/2" strip (F). Sew the leftover scrap of each strip to its matching WOF strip end to end with a diagonal seam. From each pieced strip cut a 2 1/2" x 53 1/2" strip.

From Fun-C8224 Ivory cut the following strips on the length of fabric:

• Four 1 1/2" strips. Sub-cut two 1 1/2" x 53 1/2" strips, two 1 1/2" x 33 1/2" strips, eight 1 1/2" x 2 1/2" rectangles (B) and four 1 1/2" squares (C).

• Eight 2" x 53 1/2" strips

• Four 2 1/2" strips. Sub-cut two 2 1/2" x 53 1/2" strips, two 2 1/2" x 33 1/2" strips, four 2 1/2" squares (A)

• Two 3 1/2" strips. Sub-cut the following rectangles:

* Two 3 1/2" x 9 1/2"

* Two 3 1/2" x 8 1/2"

* Two 3 1/2" x 7 1/2"

* One 3 1/2" x 6 1/2"

* One 3 1/2" x 5 1/2"

* Two 3 1/2" x 4 1/2"

* Two 3 1/2" x 2 1/2"

* Two 3 1/2" squares

From Studio-C3096 Sky:

• Cut six 2 1/2" x WOF strips.

Corner Block Assembly

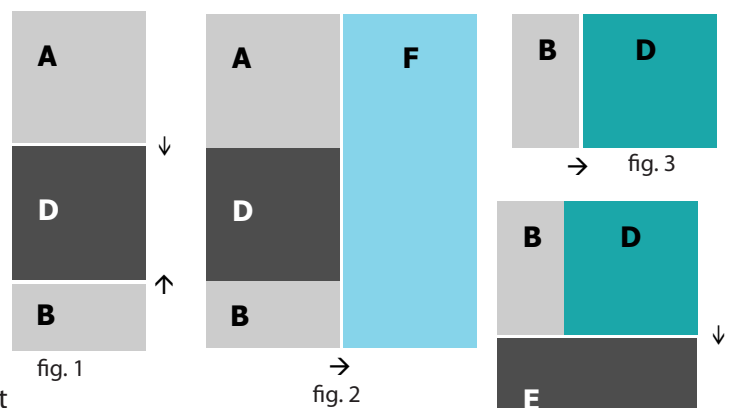
Note: There are four different corner blocks. Refer to the quilt photo for color placement. Arrange the fabric pieces for each of the four corners before beginning the directions below to be sure the correct D, E and F patches are used in each corner.

Press all seams in the direction of the arrows. Note that C4633 Tree, C4634 Snow and C4632 Leaf are one-way designs, so orient the prints in one direction.

1. Sew a 2 1/2" C8224 Ivory A square to a colored 2 1/2" D square. Add a 1 1/2" x 2 1/2" C8224-Ivory B rectangle. (figure 1)

2. Sew a colored 2 1/2" x 5 1/2" F strip to the right side of the unit made in step 1. (figure 2)

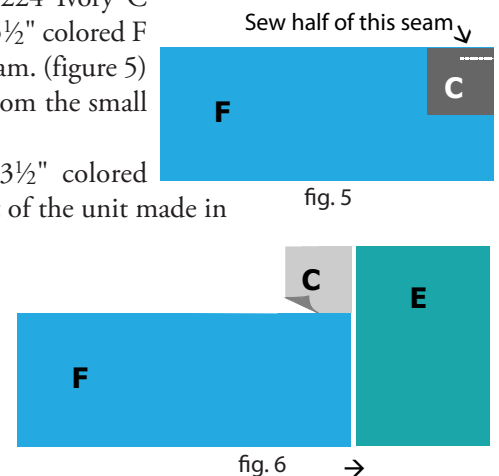
3. Sew a 1 1/2" x 2 1/2" C8224 Ivory B rectangle to a colored 2 1/2" D square. (figure 3)



4. Sew a colored 2 1/2" x 3 1/2" E strip to the bottom of the unit made in step 3. (figure 4)

5. Sew a 1 1/2" C8224 Ivory C square to a 2 1/2" x 5 1/2" colored F strip with a half-seam. (figure 5) Press seam away from the small square.

6. Sew a 2 1/2" x 3 1/2" colored strip E to the right of the unit made in step 5. (figure 6)



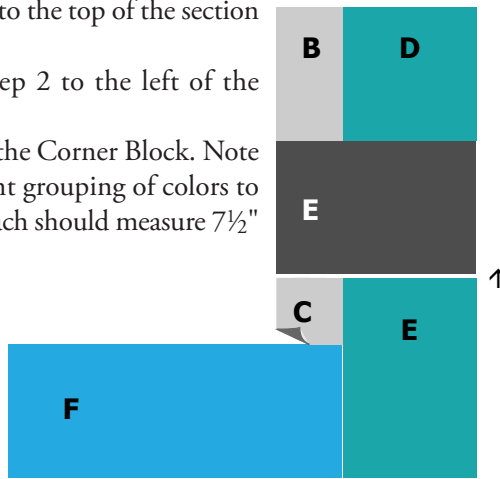
7. Sew the BDE section from step 4 to the top of the section from step 6. (figure 7)

8. Sew the ADBF section from step 2 to the left of the section from step 7. (figure 8)

9. Finish the half seam to complete the Corner Block. Note that each corner block has a different grouping of colors to coordinate with the quilt borders. Each should measure $7\frac{1}{2}$ " square.

Quilt Top Assembly

Piece the center section of the quilt as follows, referring to the quilt photo and the Quilt Assembly Diagram as needed for orientation and color placement.



10. Add the following C8224 Ivory pieces to the numbered $3\frac{1}{2}$ " x $42\frac{1}{2}$ " C4629 Winter strips as follows:

- #1—One $3\frac{1}{2}$ " x $2\frac{1}{2}$ " rectangle to the top and one $3\frac{1}{2}$ " x $9\frac{1}{2}$ " rectangle to the bottom
- #2—One $3\frac{1}{2}$ " x $5\frac{1}{2}$ " rectangle to the top and one $3\frac{1}{2}$ " x $6\frac{1}{2}$ " rectangle to the bottom
- #3—One $3\frac{1}{2}$ " x $8\frac{1}{2}$ " rectangle to the top and one $3\frac{1}{2}$ " square to the bottom.
- #4—One $3\frac{1}{2}$ " x $4\frac{1}{2}$ " rectangle to the top and one $3\frac{1}{2}$ " x $7\frac{1}{2}$ " rectangle to the bottom
- #5—One $3\frac{1}{2}$ " x $7\frac{1}{2}$ " rectangle to the top and one $3\frac{1}{2}$ " x $4\frac{1}{2}$ " rectangle to the bottom
- #6—One $3\frac{1}{2}$ " square to the top and one $3\frac{1}{2}$ " x $8\frac{1}{2}$ " strip to the bottom
- #7—One $3\frac{1}{2}$ " x $9\frac{1}{2}$ " strip to the top and one $3\frac{1}{2}$ " x $2\frac{1}{2}$ " rectangle to the bottom

11. Keeping the C4629 Winter strips in numerical order, sew them together with a C8224 Ivory 2 " x $53\frac{1}{2}$ " strip between. Add a 2 " x $53\frac{1}{2}$ " C8224 Ivory strip to the left and another to the right side of the pieced panel. Press all seam allowances toward the C8224 Ivory fabric.

12. Using the remaining $1\frac{1}{2}$ " and $2\frac{1}{2}$ " C8224 Ivory strips and the remaining colored strips, piece the right and left side border strips and the top and bottom border strips as shown in the quilt photo. Press the seams toward the C8224 Ivory fabric. Label the borders by location.

13. Sew the right and left side border strips to the center section. Press seams toward the center section.

14. Sew the corner blocks to the appropriate corners of the top and bottom borders. Press seams toward the corner blocks.

15. Sew the top and bottom borders to the quilt.

Finishing

16. Layer the quilt top, batting and backing and quilt as desired.

17. Stitch the binding strips together end to end using diagonal seams. Fold and press the resulting long strip in half lengthwise with wrong sides together. Stitch to the quilt front, matching raw edges and mitering the corners.

18. Fold the binding to the quilt underside and hand-stitch the folded edge to the quilt back.

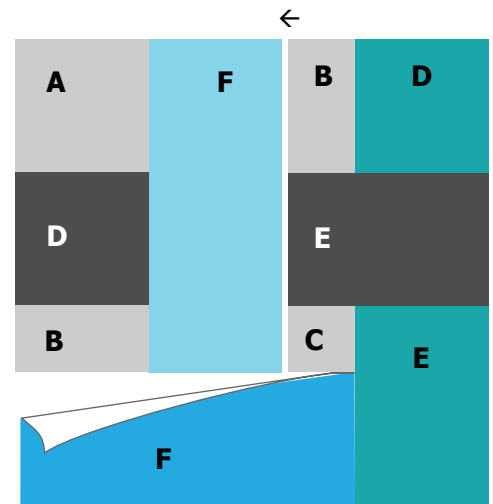
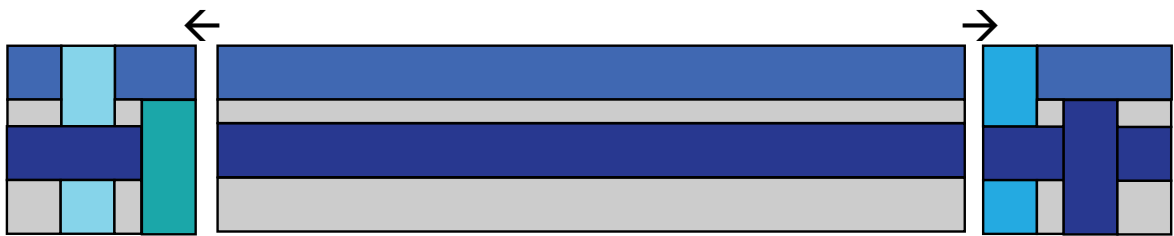
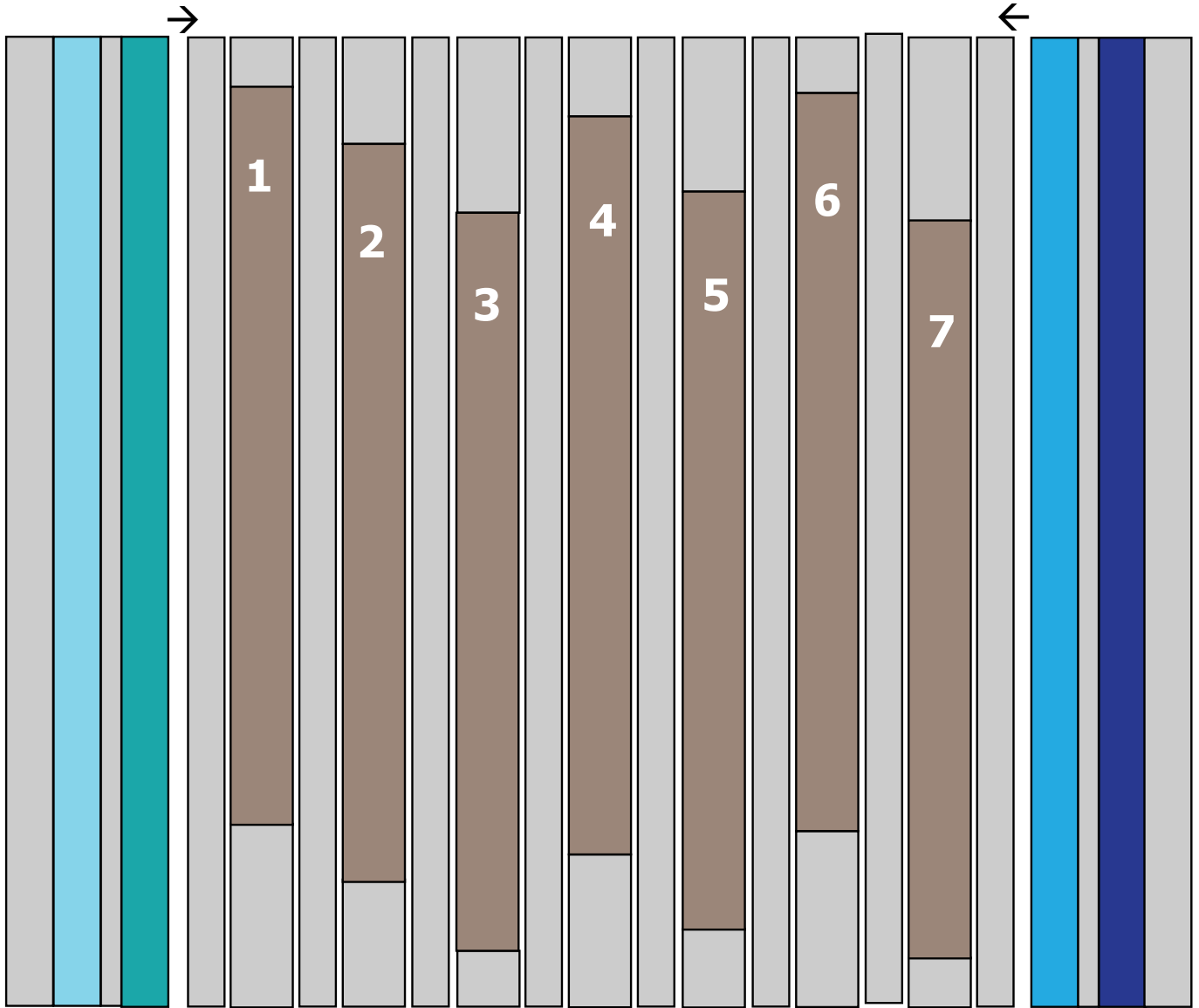
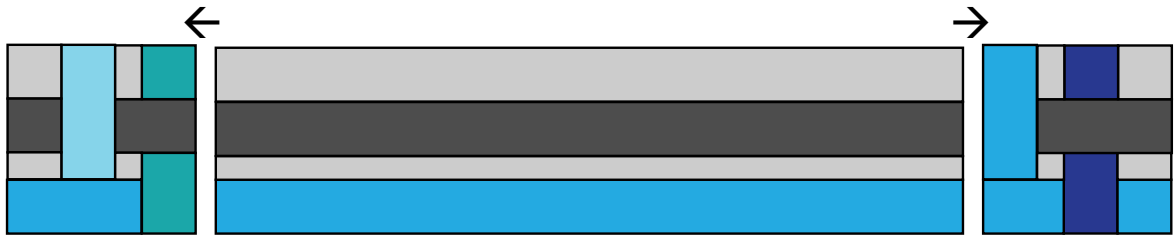


fig. 8

©2014 Timeless Treasures

www.ttfabrics.com

This pattern is for individual home use only. This pattern may not be reproduced for commercial purposes (i.e. may not be sold).



Quilt Assembly Diagram