

moda

BAKE SHOP



[Chefs](#) [Events](#) [Palette Builder](#) [Recipes](#) [Tips](#) [Weights & Measures](#) [Index](#)



Feb
3

Patchwork Pot Holder by Hillary Smith

Moda Candy Patchwork Pot Holder



by: Hilary of
Young Texan
Mama

Easy

Hi everyone! My name is Hilary and I blog over at [Young Texan Mama](#). I am really excited about sharing my first project with you over here at the Moda Bake Shop. I love working with pre-cuts and this is a simple and quick project that uses the adorable Moda Mini Charm Packs.

Ingredients:

- 1 - Moda Candy Mini Charm Pack
- 2 - Fat Quarters
- 1 - 6.5" x 6.5" piece of cotton batting
- 2 - 6.5" x 8" piece of cotton batting
- or
- 1 - 6.5" x 8.5" piece of batting & 1 - 6.5" x 8.5" piece of Insul-Bright batting



- Accessories
- Apparel
- Baby & Kids
- Bags & Totes
- Home Decor
- Quilts
- Seasonal
- Stuffed Stuff

Bakery





Instructions:

1 - 6.5" x 8.5" rectangle

Out of your 2nd fat quarter:

3 - 2.25" x 22" strips (they don't have to be exactly 22" just cut them from the long side of your fat quarter).

Cutting:

Out of one Fat Quarter cut the following:

2 - 6.5" squares



Step 1: Select 9 mini charms to be the main panel of your pot holder, and 3 mini charms to be the accent of the larger piece.



Email Updates

Enter your email address to subscribe to this blog and receive notifications of new posts by email.



Our Books



Contact Us

Fields marked with an * are required

Name *

Email *

Message *

Stitch the 9 minis into 3 rows of 3. I like to chain piece my squares over sewing one at a time.



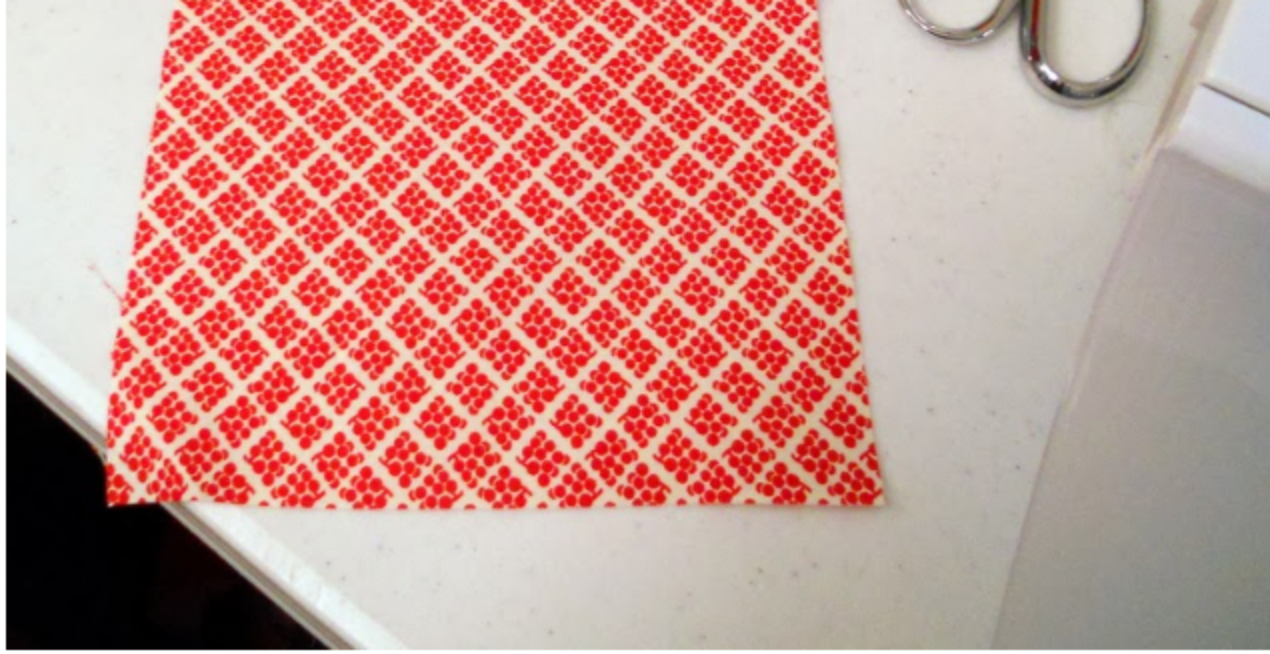
Press your seams in alternating directions, then sew the 3 rows into a 9 patch block. I like to press the seams between the rows open to reduce the bulk. You'll be left with a 6.5" square.



Step 2: Take your 3 remaining minis and sew into a row of 3. Press your seams in one direction, you'll be left with a 2.5" x 6.5" strip. Sew this strip to one of your 6.5" squares of fabric from your FQ.



How many squares are in a charm pack? *



Step 3: Using your 9 patch block, a piece of 6.5" batting, and the remaining 6.5" fabric square, make a quilt sandwich & quilt as desired.



I like to baste the layers together with a couple of safety pins to keep the layers from shifting while quilting.



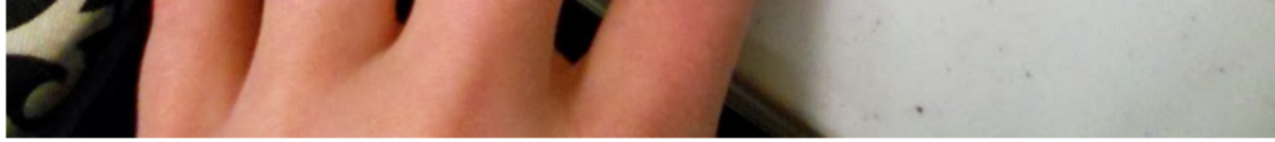


I quilted my piece with diagonal lines through the points of the squares, but you can quilt it however you want. I think it would look cute with loops or an all over meander.



Step 4: Take your pieced 6.5" x 8.5" rectangle, your 2 - 6.5" x 8.5" pieces of batting (or Insul-Bright), and your 6.5" x 8.5" rectangle. Sandwich the 4 layers together, baste with safety pins, and quilt. I used 2 pieces of cotton batting for the interior of my pot holder.

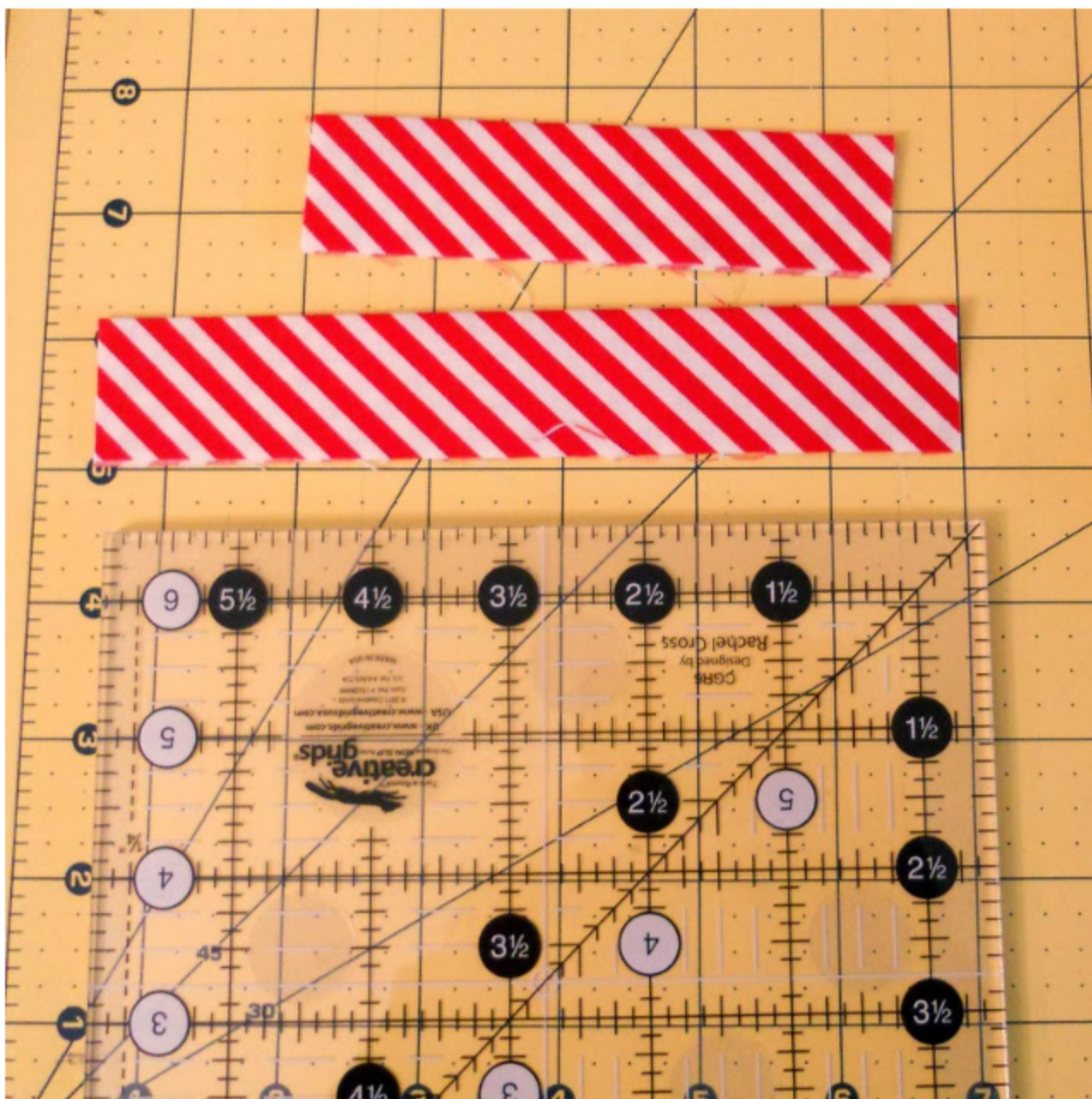




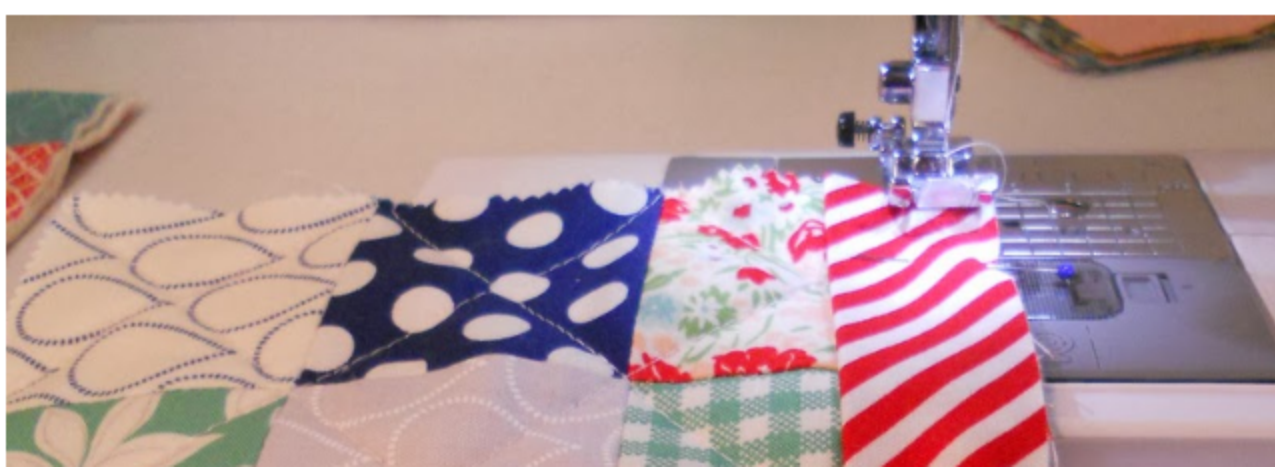
I've never had problems with 2 layers of cotton batting not being enough insulation, but if your worried, then a layer of Insul-bright would definitely protect your hand from heat.



Step 5: Sew your 3 binding strips together, end to end, so you end up with on long strip. Press the seams open to reduce the bulk. Fold binding in half, wrong sides together, and press. Cut a 4 inch piece of binding for your loop, and cut a 6.5 inch piece of binding for the top of your square panel.



Take the 6.5 inch strip and sew it to the top edge of the main panel with a 1/4" seam allowance. Once sewn, fold it around to the back and stitch in place. I like to machine bind mine, but if you prefer you can hand stitch it down.





This is what your main piece will look like when you're finished. Set it aside.



Step 6: With your mini charms facing up, baste your 2 panels together with a 1/8" seam allowance. That will prevent shifting when you sew your binding on. Sew slowly because you'll be sewing through several layers of fabric.



Take the 4.5" piece and fold the ends to the center and press, creating a double fold

binding. Sew along the open long edge to close it together.



Pin and baste the loop you just created to the back of the 6.5" x 8.5" quilted panel.



Step 7: Take the remainder of your binding and stitch it to your potholder with 1/4" seam allowance. Again, sew slowly because you will be sewing through several layers of fabric. A walking foot might be beneficial for this step.





When you get to the loop, make sure it is laying flat on the back of the pot holder.



Step 8: When you get back around to your starting point, make sure you have enough binding so that the 2 edges overlap about 3/4". (I had already trimmed out the remainder of my binding at this point.)



Fold over the raw edge of one strip, and then tuck the other one inside. That way when you sew it together there are no raw edges showing. Fold the edges flat and continue sewing your seam, making sure to back-stitch where you started.





Step 9: Once it is stitched down, fold binding to the back and pin or clip in place. If you pin, try not to sew over your pins because it could break your needle and mess up your machine. I learned that the hard way when I first learned how to sew.



Again when you get to the loop, make sure it is laying flat. When you get back around to your starting point back-stitch to secure the stitches, and you're done!



Yield:

When you're finished you are left with 1 super adorable pot holder to spice up your kitchen!



There are enough mini charms in a pack to make 3 pot holders, but you'll need more of your other materials.



I hope you enjoy making this pot holder as much as I did, and if you make it I'd love for you to share it to the [Moda Bake Shop Flickr group](#). Thanks so much for stopping by!

Hilary Smith

{www.youngtexanmama.com}

 *Printer Friendly Version*

[About](#) [Latest Posts](#)



Hilary Smith

JOIN THE CONVERSATION



This entry was posted in [Easy](#), [Fat Quarter Bundle](#), [Home Decor](#), [Moda Candy/Mini Charms/Petit Fours](#) and tagged [April Showers](#), [Bonnie and Camille](#).

[← Story Book Star Baby Quilt](#)

[Recipe Updates and Correctio...](#)

©2009-2018 Moda Bake Shop - Privacy Policy

Jelly Roll®, Layer Cake®, Honey Bun® and Turnover® are registered trademarks of Moda Fabrics/United Notions.

The individual designers featured on this website ultimately hold the copyright for their projects and designs posted on the Moda Bake Shop. Patterns are not intended for sale or digital distribution. All items made from Moda Bake Shop patterns are for personal, non-commercial use only, unless given explicit written permission from the design owner to sell finished products made from their pattern tutorials featured on the Moda Bake Shop.