

## Project: Peaches and Cream

DESIGNER: CYNDI WALKER OF STITCH STUDIOS



Pieced sashing in fruit-hued florals gives this peachy throw its delectable twist.

## Project: Peaches and Cream

### Materials

- ¼ yard gold print (blocks, sashing)
- ⅜ yard pink floral (blocks, sashing)
- 1¼ yards cream dot-and-floral (blocks, sashing, border)
- ½ yard pink dot-and-floral (blocks, sashing)
- 1¼ yards off-white print (blocks, sashing)
- ⅝ yard pink print (sashing, binding)
- ¼ yard green floral (appliqués, sashing)
- ¼ yard green dot-and-floral (appliqués, blocks, sashing)
- 3⅝ yards backing fabric
- 60" square batting
- Lightweight fusible web

Finished quilt: 54½" square

Finished blocks: 18" square, 6" square

Quantities are for 44/45"-wide, 100% cotton fabrics.

All measurements include a ¼" seam allowance. Sew with right sides together unless otherwise stated.

### Cut Fabrics

To make the best use of your fabrics, cut pieces in the following order. Cut border strips lengthwise (parallel to the selvage). Patterns are on page 7. To use fusible web for appliquéing, complete the following steps.

1. Lay fusible web, paper side up, over patterns A and B. Use a pencil to trace each pattern four times, leaving at least ½" between tracings. Cut out each fusible-web shape roughly ¼" outside traced lines.

2. Following manufacturer's instructions, press fusible-web shapes onto backs of designated fabrics; let cool.
3. Cut out fabric shapes on drawn lines and peel off paper backings.

#### From gold print, cut:

- 20—2½" squares

#### From pink floral, cut:

- 16—2⅞" squares, cutting each in half diagonally for 32 medium triangles total
- 20—2½" squares

#### From cream dot-and-floral, cut:

- 4—6½×42½" border strips
- 40—2½" squares

#### From pink dot-and-floral, cut:

- 16—4½" squares
- 12—2½" squares

#### From off-white print, cut:

- 8—4⅞" squares, cutting each in half diagonally for 16 large triangles total
- 4—4½×18½" rectangles
- 4—2½×18½" rectangles
- 8—3½×12½" rectangles
- 16—2×3½" rectangles
- 24—2½" squares
- 8—2⅞" squares, cutting each in half diagonally for 16 small triangles total

#### From pink print, cut:

- 6—2½×42" binding strips
- 12—2½" squares

#### From green floral, cut:

- 9—2½" sashing squares
- 4 of Pattern A

#### From green dot-and-floral, cut:

- 4—3½" squares
- 24—2½" squares
- 8—2⅞" squares, cutting each in half diagonally for 16 small triangles total
- 4 of Pattern B

### Assemble and Appliqué Peach Blocks

1. Referring to **Diagram 1**, sew together two gold print 2½" squares and two pink floral 2½" squares in pairs. Press seams in opposite directions. Join pairs to make a Four-Patch unit (**Diagram 2**). Press seam in one direction. The Four-Patch unit should be 4½" square including seam allowances.
2. Sew pink floral medium triangles to adjacent edges of cream dot-and-floral 2½" square (**Diagram 3**). Press seam allowances toward triangles to make a triangle unit.
3. Referring to **Diagram 4**, join off-white print large triangle to triangle unit; press seam allowance toward large triangle to make a triangle-square unit. The triangle-square unit should be 4½" square including seam allowances.
4. Repeat steps 2 and 3 to make four triangle-square units total.
5. Lay out four pink dot-and-floral 4½" squares, a Four-Patch unit, and four triangle-square units (**Diagram 5**) in three rows. Sew together pieces in each row. Press seams in one direction, alternating direction with each row. Join rows to complete block center. The block center should be 12½" square including seam allowances.
6. Referring to **Block Assembly Diagram**, sew off-white print 3½×12½" rectangles to opposite edges of block center. Press seams toward rectangles. Join an off-white print 4½×18½" rectangle to top edge and an off-white

## Project: Peaches and Cream

print  $2\frac{1}{2} \times 18\frac{1}{2}$ " rectangle to the bottom edge to make a block. Press seams toward rectangles. The block should be  $18\frac{1}{2}$ " square including seam allowances.

7. Position leaf appliqués A and B on block. Fuse in place. Using matching thread, machine-blanket-stitch around leaves to complete appliquéd peach block.
8. Repeat steps 1 through 7 to make four appliquéd peach blocks total.

### Assemble Quilt Center

1. Lay out nine gold, off-white, or pink print; pink floral; or cream, green, or pink dot-and-floral  $2\frac{1}{2}$ " squares and sew together to make a sashing unit (Diagram 6). Press seam allowances in one direction. The sashing unit should be  $2\frac{1}{2} \times 18\frac{1}{2}$ " including seam allowances. Repeat to make 12 sashing units total.
2. Referring to Quilt Assembly Diagram, lay out four appliquéd peach blocks, 12 sashing units, and nine green floral  $2\frac{1}{2}$ " sashing squares in five rows.
3. Sew together pieces in each row. Press seams toward sashing units.
4. Join rows to complete quilt center. Press seams in one direction. The quilt center should be  $42\frac{1}{2}$ " square including seam allowances.

### Assemble Churn Dash Blocks

1. Sew together an off-white print small triangle and a green dot-and-floral small triangle to

make a triangle-square (Diagram 7). Press seam toward green triangle. The triangle-square should be 2" square including seam allowances. Repeat to make sixteen triangle-squares total.

2. Lay out one green dot-and-floral  $3\frac{1}{2}$ " square, four off-white print  $2 \times 3\frac{1}{2}$ " rectangles, and four triangle-squares (Diagram 8) in three rows. Sew together pieces in each row. Press seams in one direction, alternating direction with each row. Join rows to make a Churn Dash block. Press seam allowances in one direction. The Churn Dash block should be  $6\frac{1}{2}$ " square including seam allowances. Repeat to make four Churn Dash blocks total.

### Assemble and Add Border

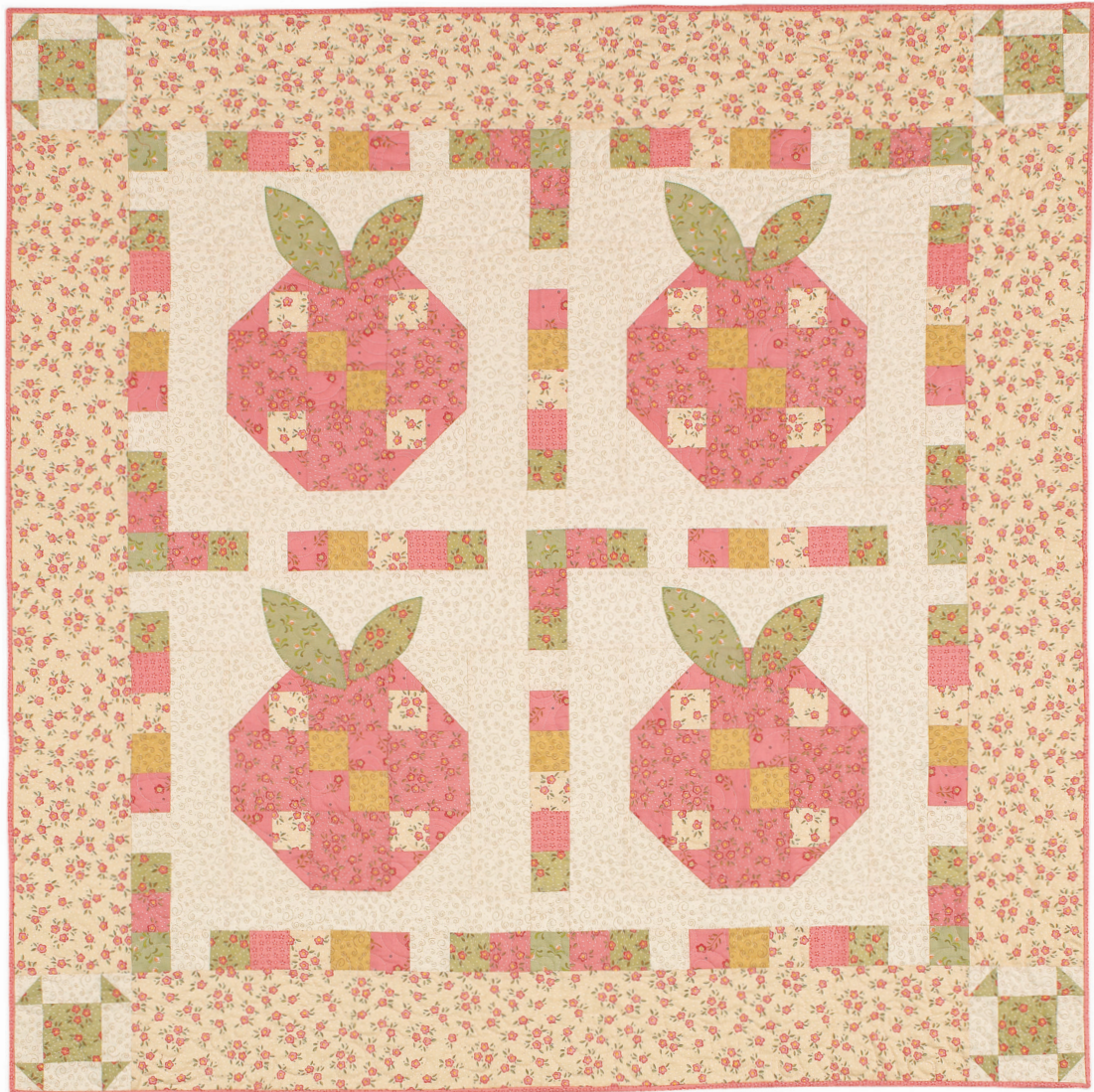
1. Sew cream dot-and-floral  $6\frac{1}{2} \times 42\frac{1}{2}$ " border strips to opposite edges of quilt center. Press seams toward border.
2. Add a Churn Dash block to each end of remaining cream dot-and-floral  $6\frac{1}{2} \times 42\frac{1}{2}$ " border strips to make two pieced border units. Press seams toward border strips. Sew pieced border units to remaining edges of quilt center to complete quilt top. Press seams toward border.

### Finish Quilt

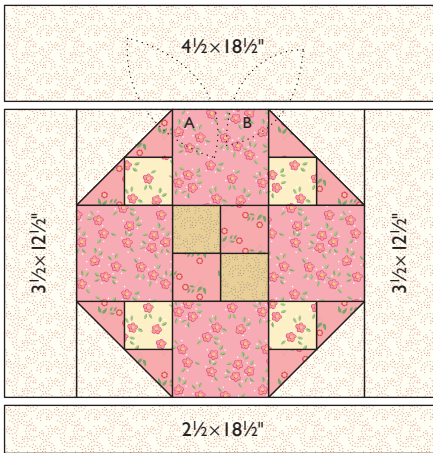
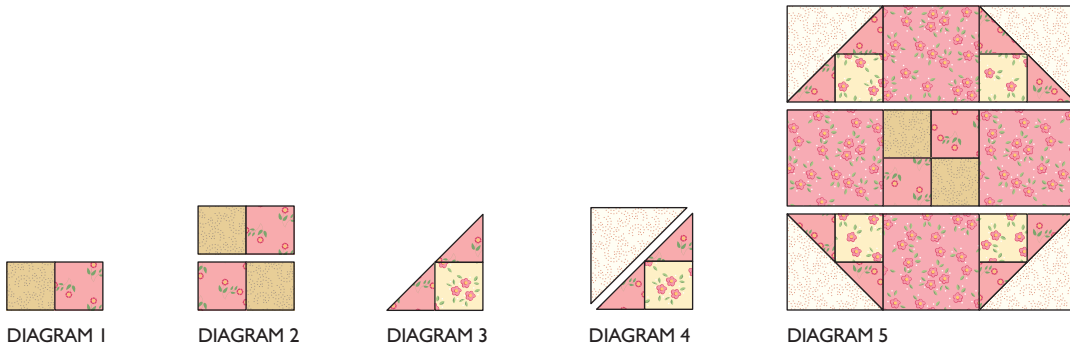
1. Layer quilt top, batting, and backing; baste.
2. Quilt as desired. Cyndi stitched an allover swirl pattern across the quilt top.
3. Bind with pink print binding strips.



Project: Peaches and Cream



Project: Peaches and Cream



BLOCK ASSEMBLY DIAGRAM

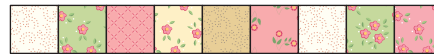


DIAGRAM 6



DIAGRAM 7

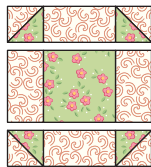
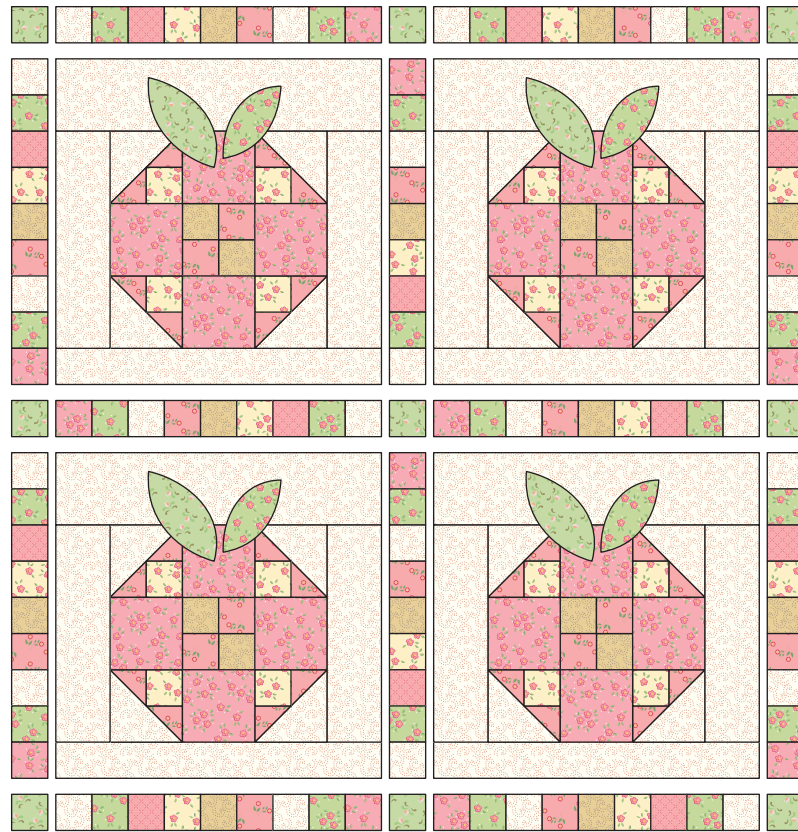


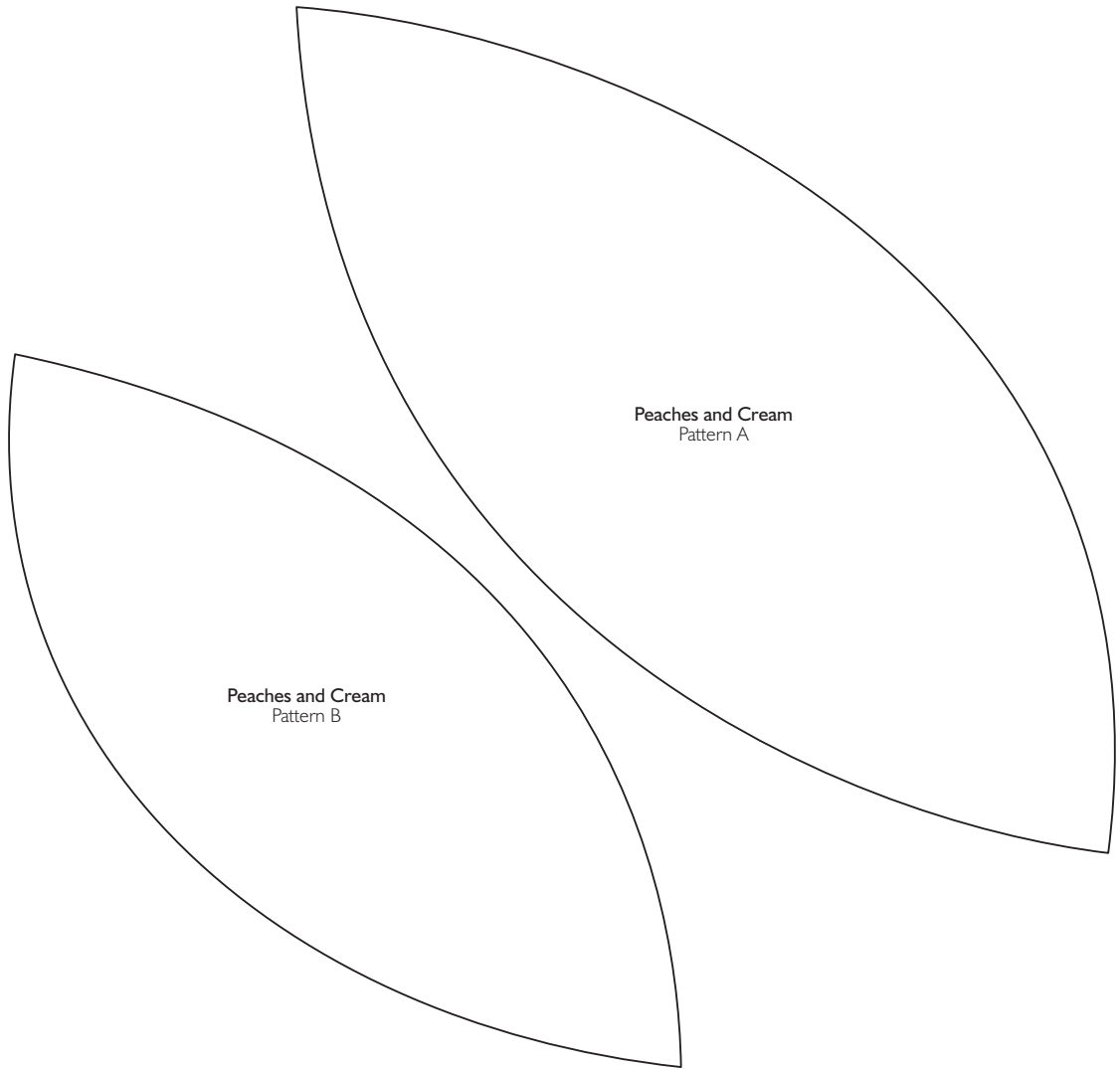
DIAGRAM 8

Project: Peaches and Cream



QUILT ASSEMBLY DIAGRAM

Project: Peaches and Cream



This box should  
measure 1".



**\* NOTE:**

When printing a  
downloadable pdf, set Page  
Scaling preference to NONE  
to print patterns at 100%.  
Do NOT "Shrink to Fit"  
or "Fit to Printable Area."