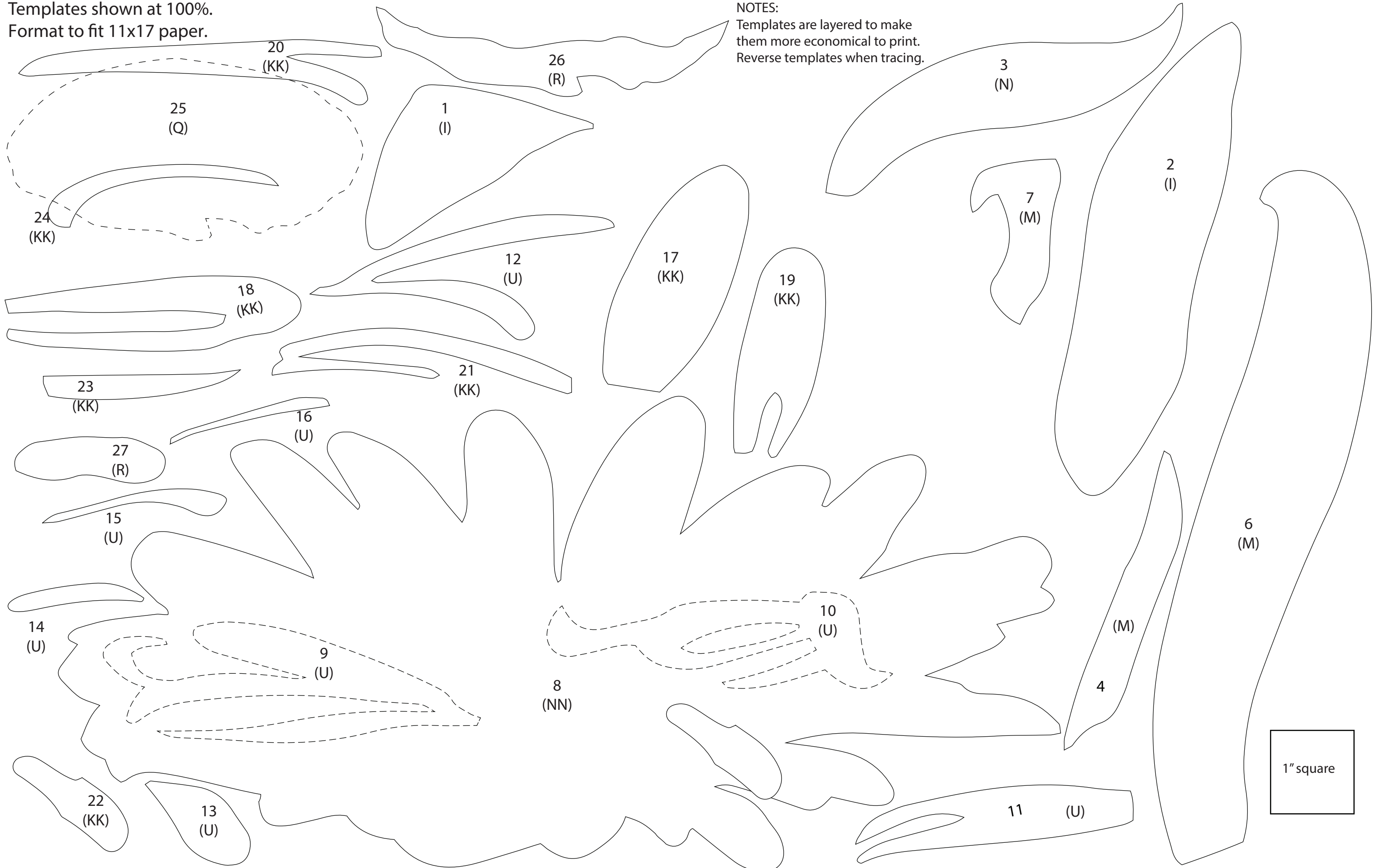


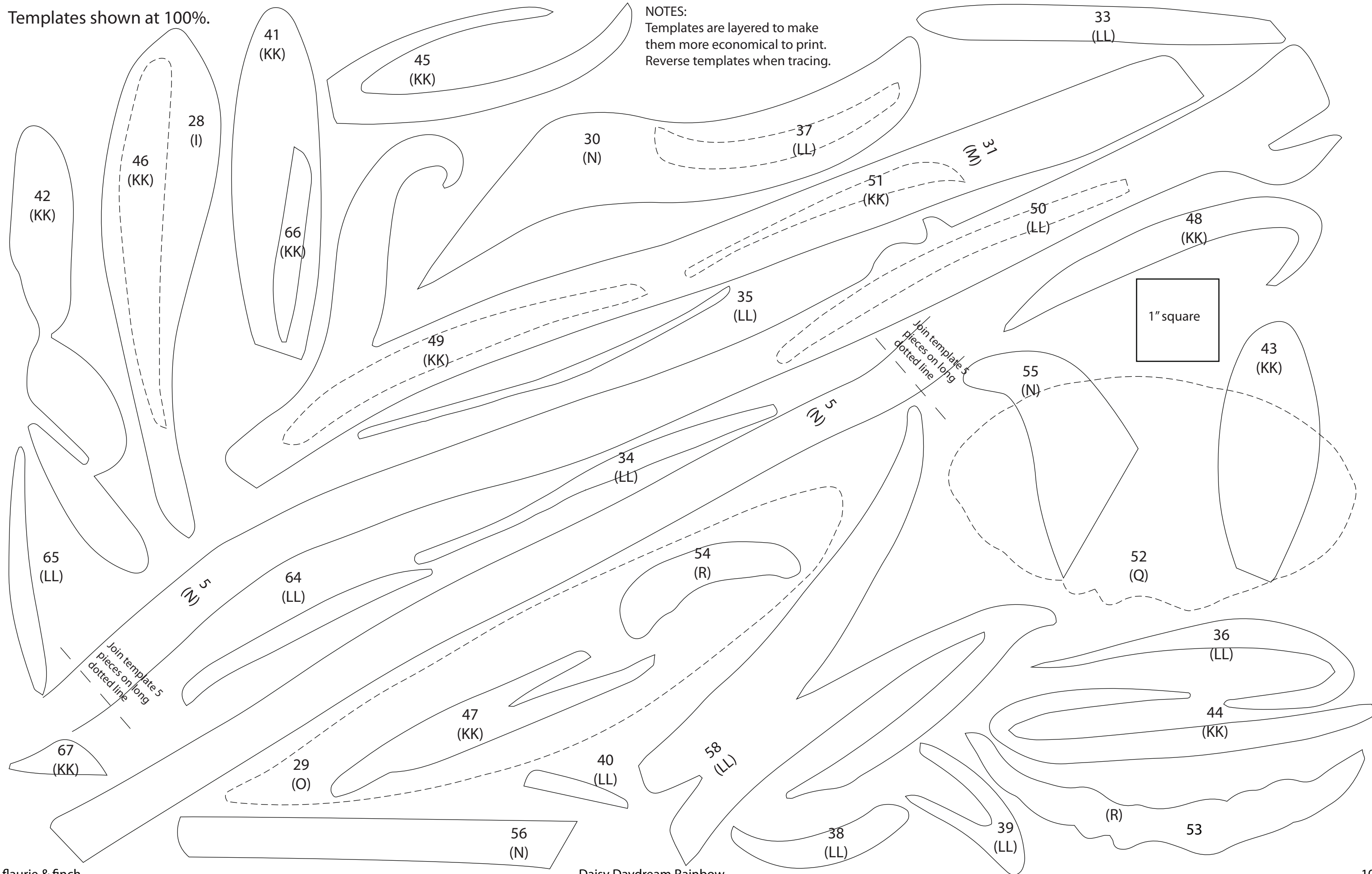
Templates shown at 100%.  
Format to fit 11x17 paper.

NOTES:  
Templates are layered to make  
them more economical to print.  
Reverse templates when tracing.



Templates shown at 100%.

NOTES:  
Templates are layered to make them more economical to print.  
Reverse templates when tracing.



Templates shown at 100%.

NOTES:  
Templates are layered to make them more economical to print.  
Reverse templates when tracing.

82  
(R)

63  
(LL)

32  
(NN)

72  
(KK)

75  
(KK)

76  
(KK)

78  
(KK)

70  
(KK)

68  
(KK)

61  
(LL)

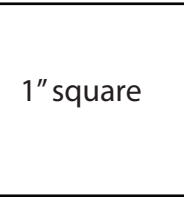
74  
(KK)

60  
(LL)

62  
(LL)

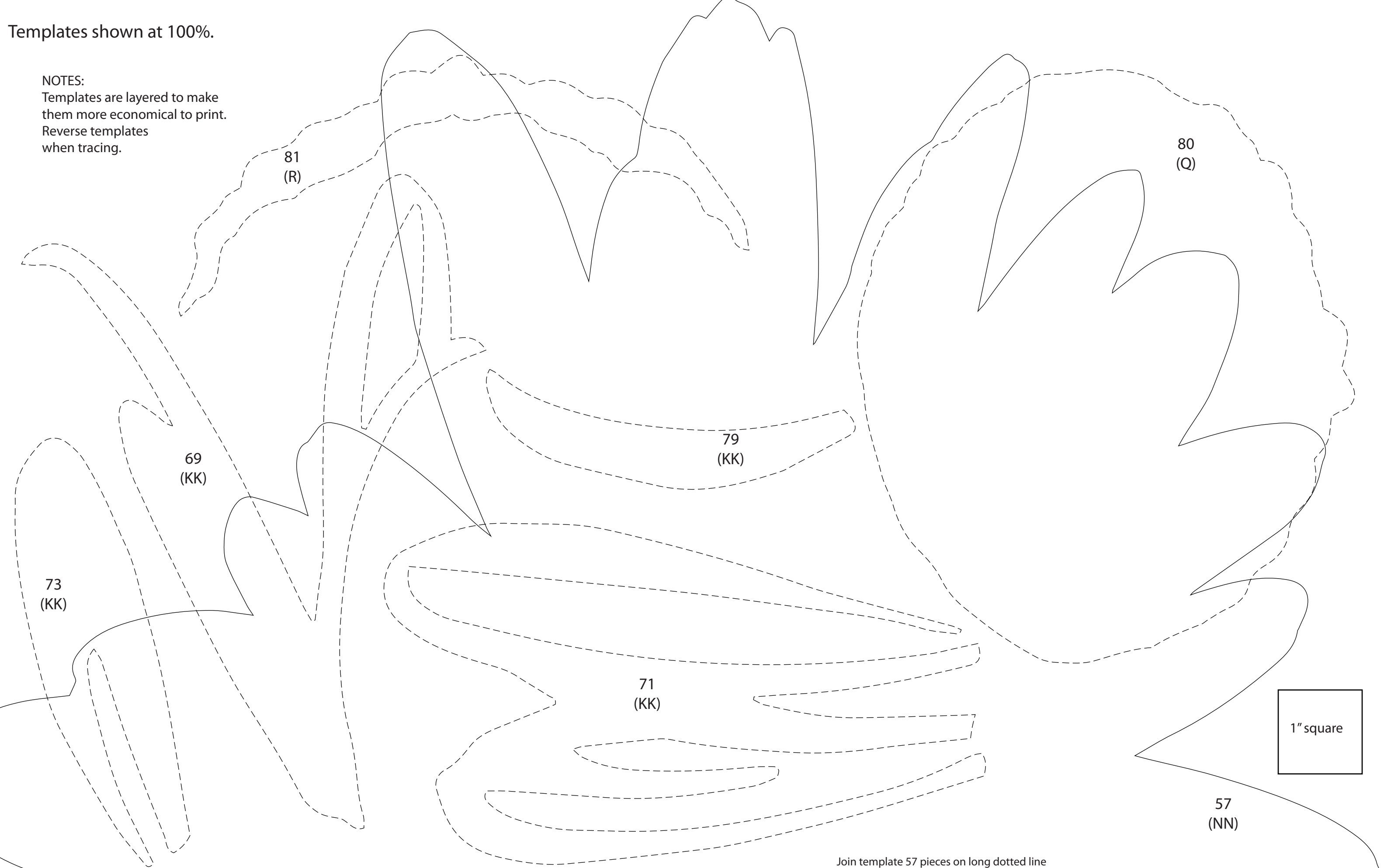
59  
(LL)

77  
(KK)



Templates shown at 100%.

NOTES:  
Templates are layered to make them more economical to print.  
Reverse templates when tracing.



Templates shown at 100%.

NOTES:  
Templates are layered to make them more economical to print.  
Reverse templates when tracing.

Join template 57 pieces on long dotted lines

Join template 86 pieces on long dotted lines

57  
(NN)

88  
(O)

98  
(KK)

86  
(M)

86  
(M)

84  
(I)

57  
(NN)

Join template 86 pieces on long dotted lines

97  
(KK)

91  
(U)

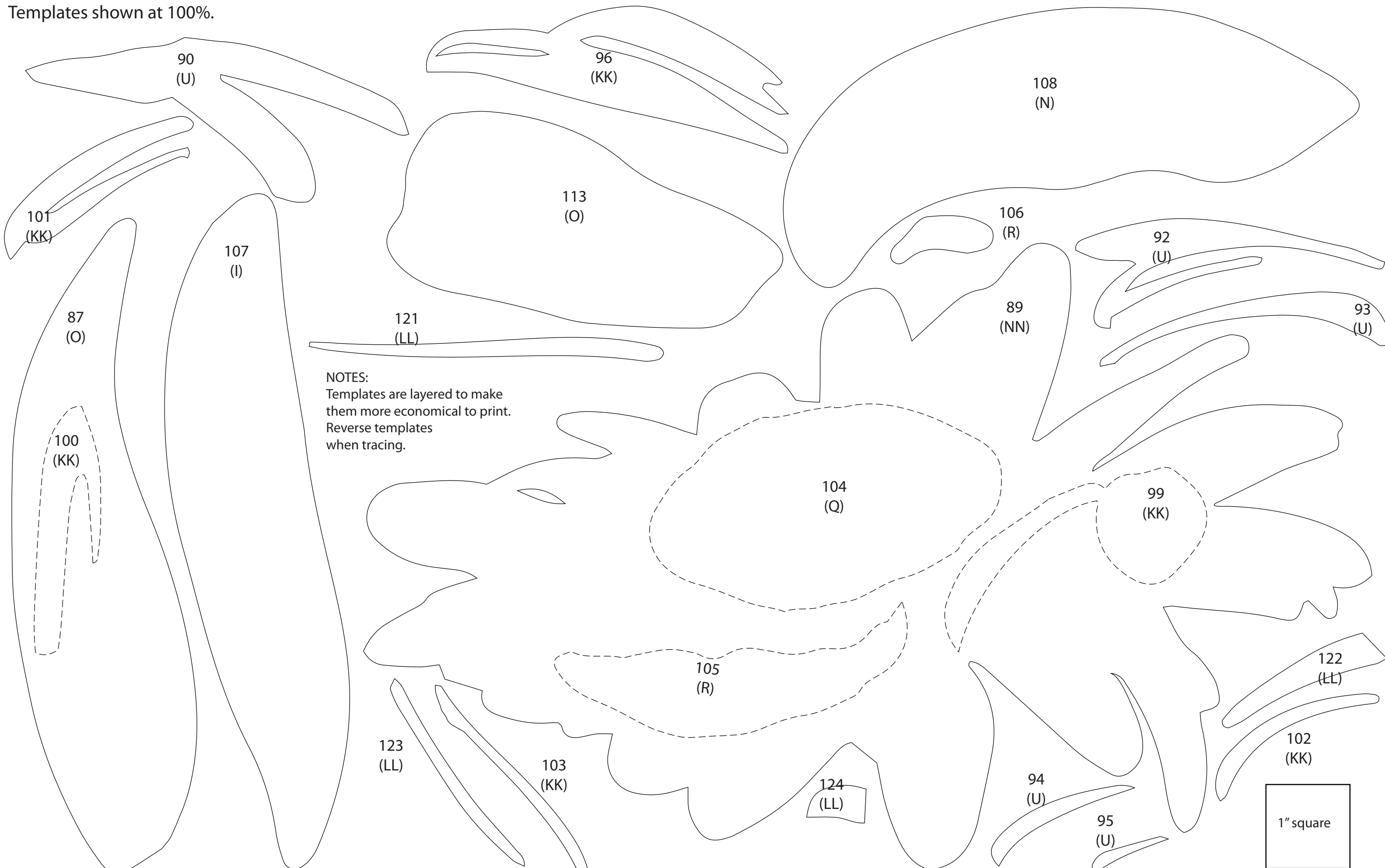
1" square

85  
(N)

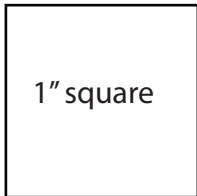
83  
(N)

Join template 57 pieces on long dotted lines

Templates shown at 100%.



NOTES:  
 Templates are layered to make them more economical to print.  
 Reverse templates when tracing.

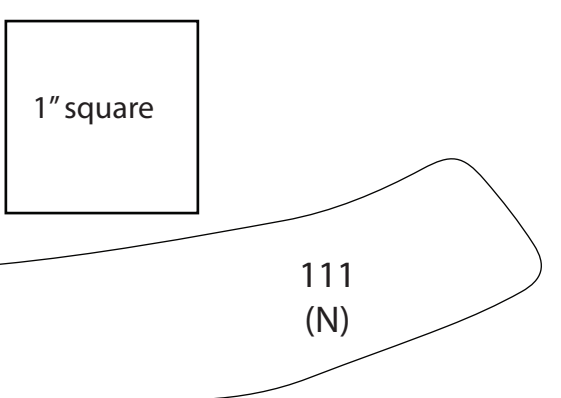
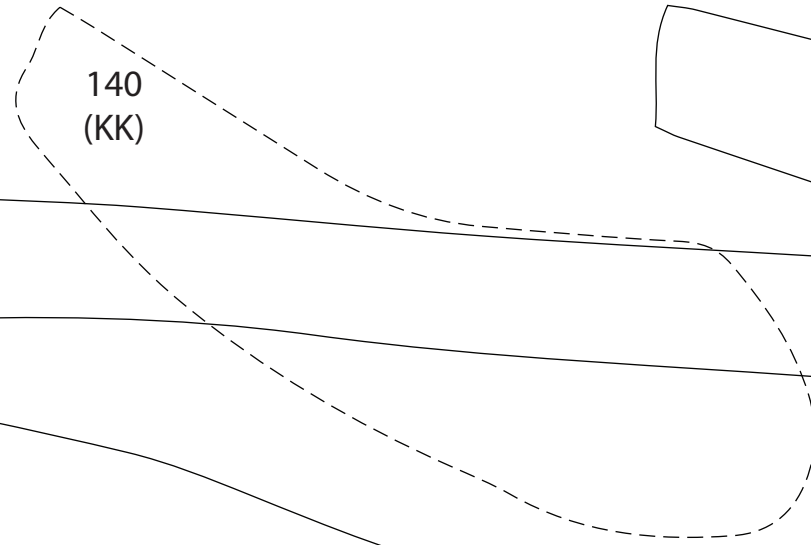
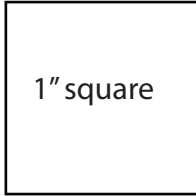


Templates shown at 100%.

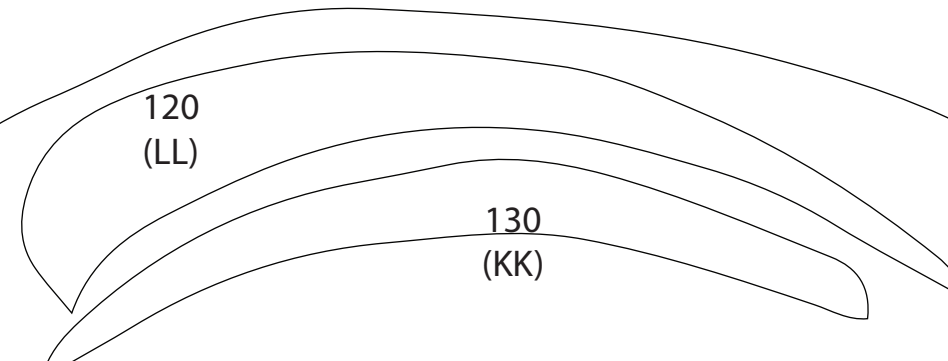
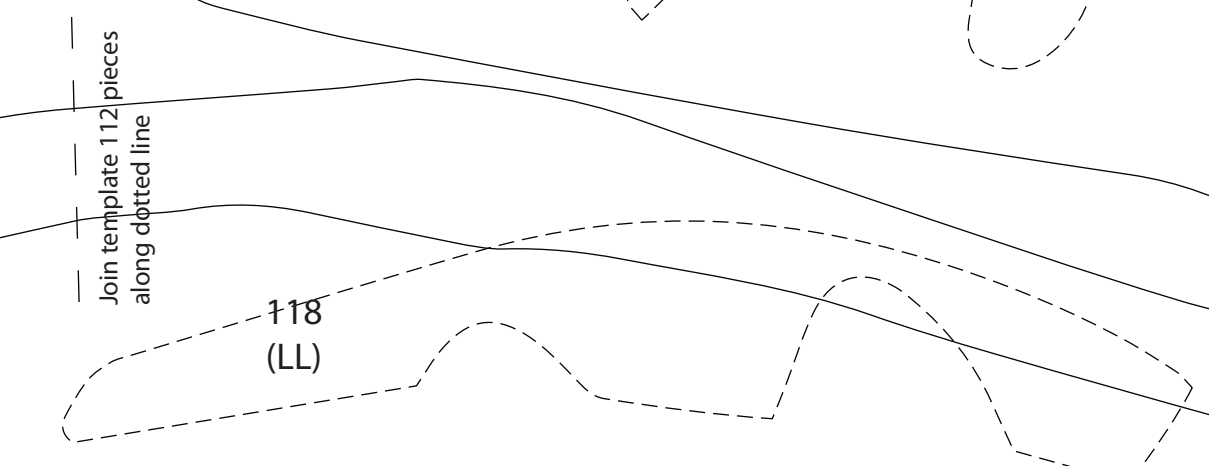
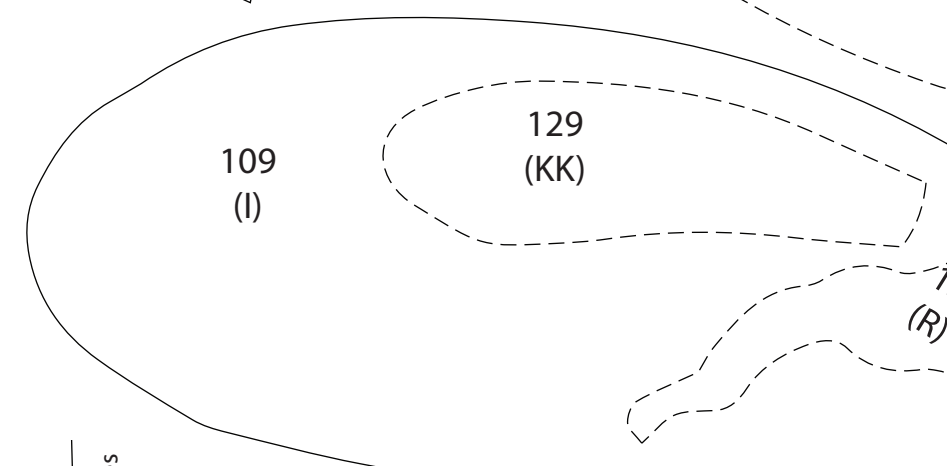
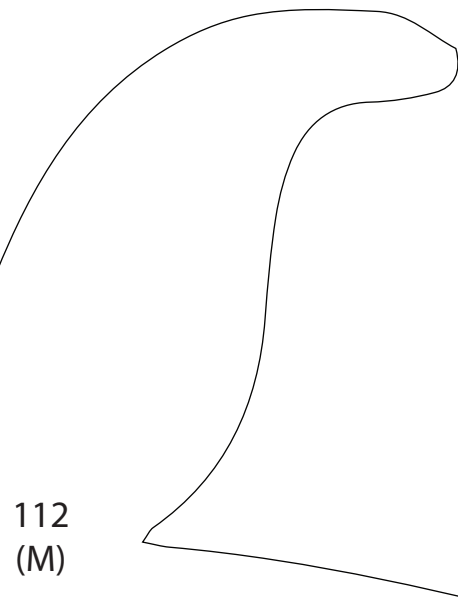
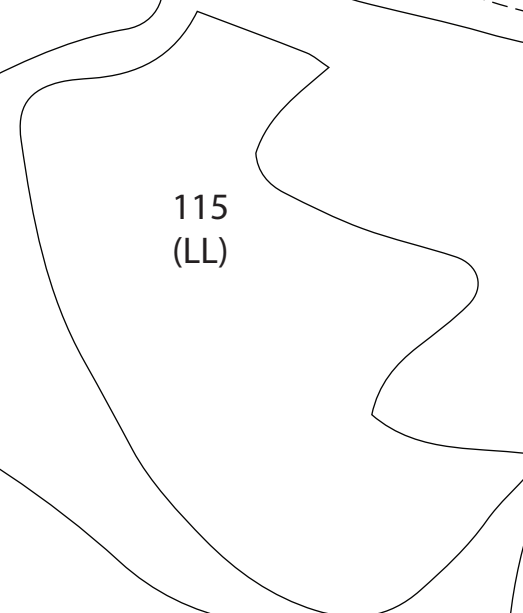
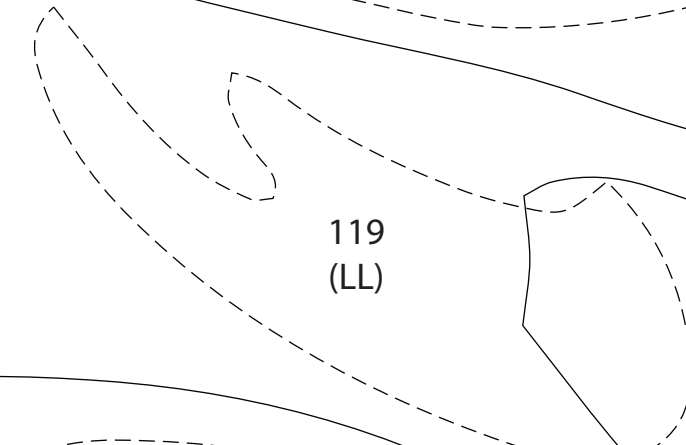
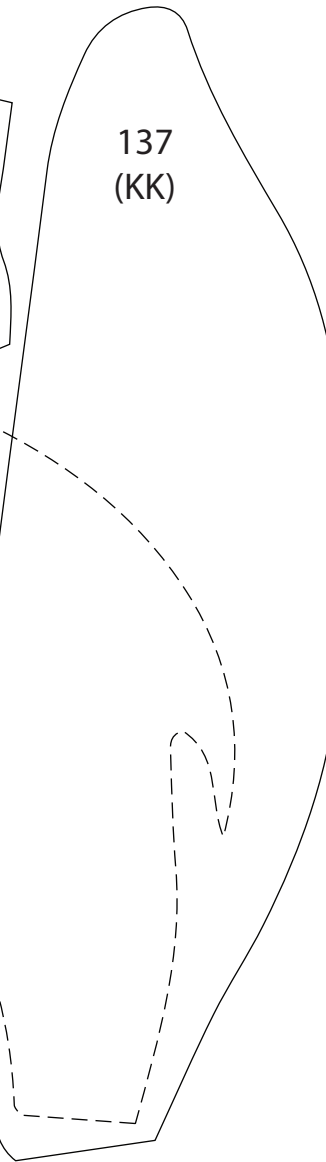
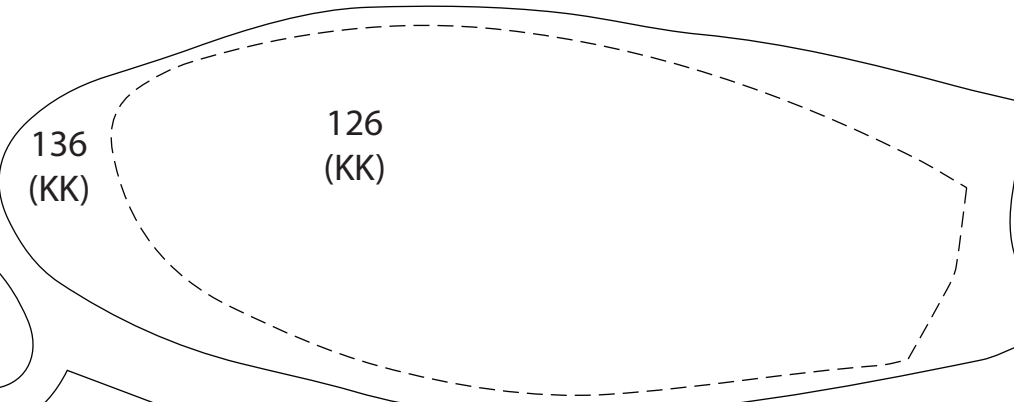
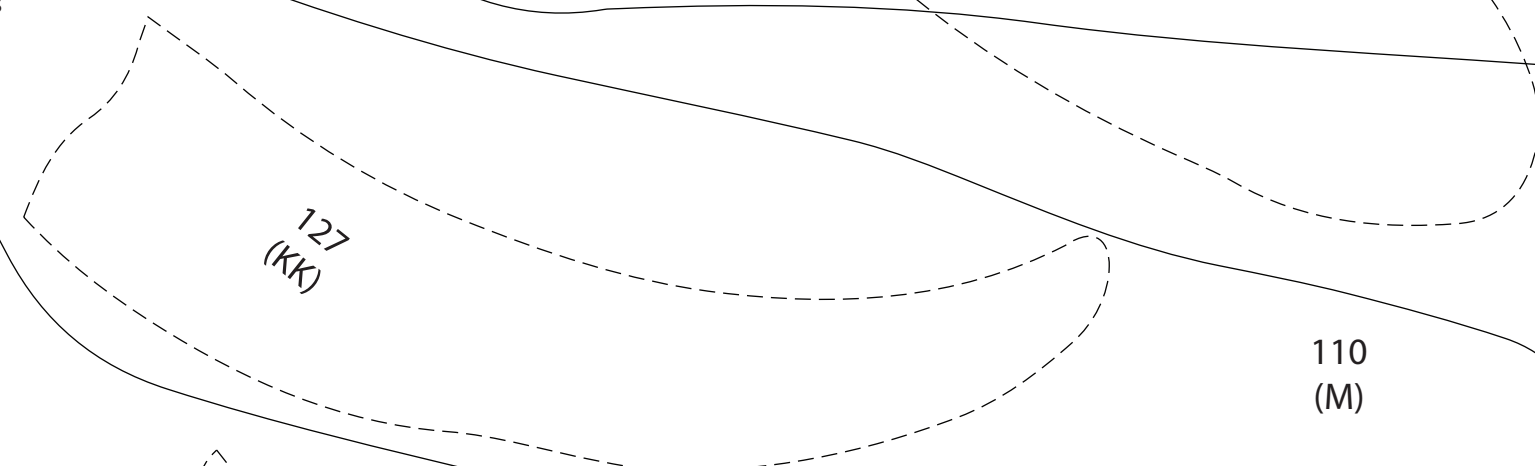
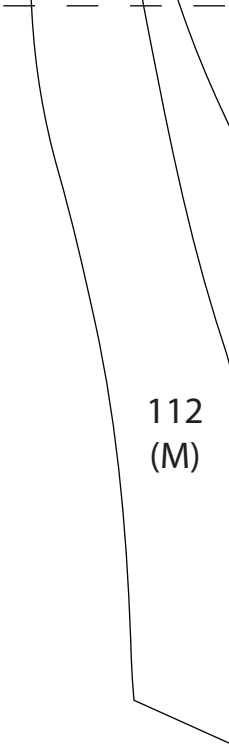
NOTES:

Templates are layered to make them more economical to print.

Reverse templates when tracing.



Join template 112 pieces along dotted line



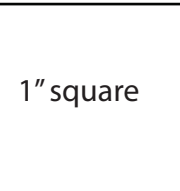
Templates shown at 100%.

NOTES:  
Templates are layered  
to make them more  
economical to print.  
Reverse templates  
when tracing.

Join template 114 pieces on long dotted line

114  
(MM)

132  
(R)



1" square

139  
(KK)

138  
(KK)

114  
(MM)

131  
(Q)

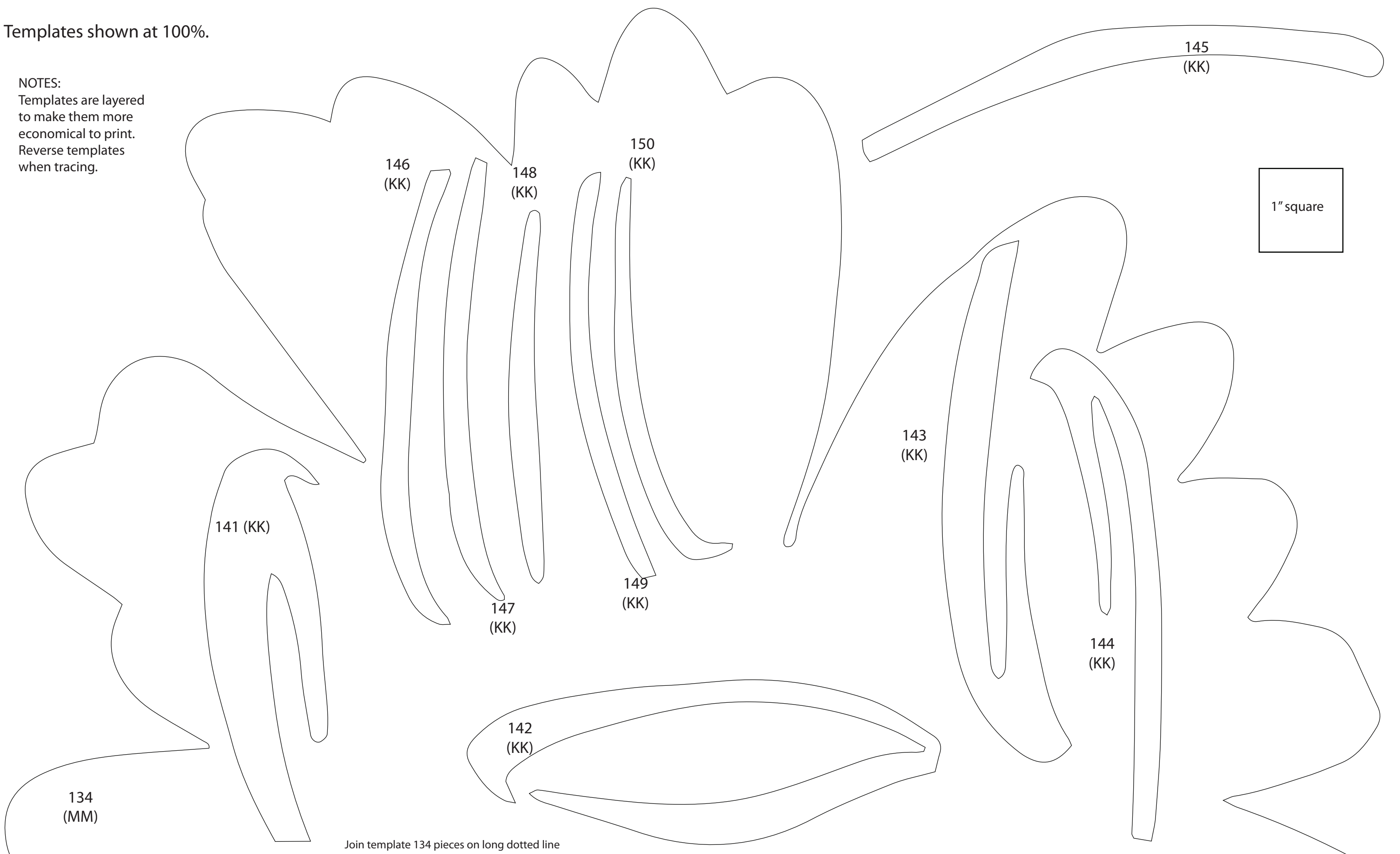
128  
(KK)

Join template 114 pieces on long dotted line



Templates shown at 100%.

NOTES:  
Templates are layered  
to make them more  
economical to print.  
Reverse templates  
when tracing.



Templates shown at 100%.

NOTES:  
Templates are layered  
to make them more  
economical to print.  
Reverse templates  
when tracing.

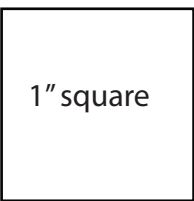
151  
(Q)

135 (KK)

153  
(R)

152  
(R)

134  
(MM)



Join template 134 pieces on long dotted line